



Laser Products



www.GCCworld.com

GCC Headquarters	4F-1., No.236, Fude 2nd Rd., Xizhi Dist., New Taipei City 22151, Taiwan	886-2-6616-6692	Fax : 886-2-2694-6875
GCC China	No.1, Chen Feng Road, Yushan, Kunshan, Jiangsu 215300, China	86-512-5726-1515	Fax : 86-512-5726-1518
GCC Europe B.V.	Eglantierbaan 43-45, 2908 LV, Capelle a/d IJssel, The Netherlands	31-10-458-9367	
GCC America, Inc.	20550 Carrey Road, Walnut, CA 91789, USA	1-909-718-0248	Fax : 1-909-718-0251
		US & Canada Only	Toll Free: 1-888-284-5211



Innovation
With a Human Touch



www.GCCworld.com



National
Outstanding Award



Outstanding Photonics
products Award



Industrial Technology
Advancement Award

LASER SYSTEMS

Engraver \ Cutter \ Marker

Founded in 1989, GCC is a global forefront equipment-manufacturing provider in the visual communication industries. Headquartered in Taiwan; GCC serves an international network of distributors worldwide and has branch offices throughout United States, Europe and China. GCC provides a broad range of hi-tech and quality products including cutting plotters, laser engraving / marking / cutting systems, UV-curable inkjet printers, printer/cutter and apparel plotters. With over 100 current and pending worldwide product patents and trademarks, GCC has earned a worldwide reputation for innovation, quality and reliability.

Table of Contents

1

Application
Sample

P1 Application

P1~3 Engraver/Cutter/Marker

4

Laser Engraving
Systems

P4~P6 Laser Engraving Systems

P7~P8 Piolas 400 / Spirit PRO Series

P9~P10 S400 / E200S

P11~P12 Spirit Series / Spirit GLS Hybrid

P13~P14 MercuryIII / C180 II

P15 MG380 Hybrid

16

Laser Cutting
Systems

P16 Laser Cutting Systems

P17~P18 X Series / FMC280-Z1

P19 T500

20

Laser Marking
Systems

P20 Laser Marking Systems

P21~P22 I Series / C Series

P23~P24 LFC D / 3DS



GCC Laser Engraving Systems

GCC Laser Marking Systems

GCC Laser Cutting Systems

Contact Info



GCC Headquarters

4F, No.236, Fu-Te 2nd Rd., Hsi Chih, Taipei Hsien, 221,Taiwan
Tel : +886-2-2694-6687 Fax :+886-2-2694-6875
sales@gccworld.com
www.GCCworld.com



GCC America Inc.

20550 Carrey Road, Walnut, CA 91789, USA
Tel : +1-909-718-0248 Fax : +1-909-718-0251
sales@gccamerica.com
www.GCCworld.com



GCC China

No.1,Chen Feng Road, Yushan, Kunshan, Jiangsu
215300, China
Tel : +86-512-5726-1515 Fax :+86-512-5726-1518
marketing@gcc-china.com
www.GCCworld.com



GCC Europe B.V.

Eglatierbaan 43-45 , 2908 LV, Capelle aan den IJssel,
The Netherlands
Tel : +31-(0)10-458-9367
eusales@gccworld.com
www.GCCworld.com

WE CAN DO MORE
than you can imagine !

Laser Engraving Systems



Egg



Stamp

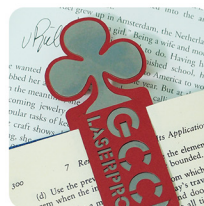


Phone Engraving

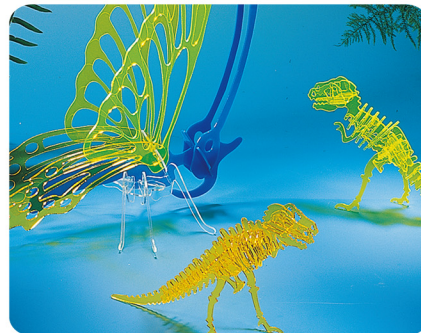
Laser Cutting Systems



Acrylic



Metal



Acrylic

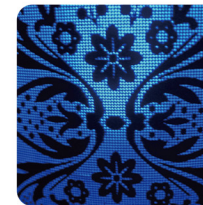
GCC LaserPro laser engravers can be used for impeccable engraving and fine cutting. Laser processing can be incorporated into all kinds of manufacturing process or fabrication. Combine your creativity with the machine and the possibilities are unlimited.



Wood



Stone



Lamp Cover



Guitar Fretboard



Ring



T-shirt



Acrylic



Leather

GCC LaserPro Laser cutters are suitable for various applications that require laser cutting. With models varying from 80W - 200W, there will be a suitable model for your cutting needs.



3D Puzzle



Door Hanger



Wood



Carousell



3D Model



Magnet



Carpet



Clock



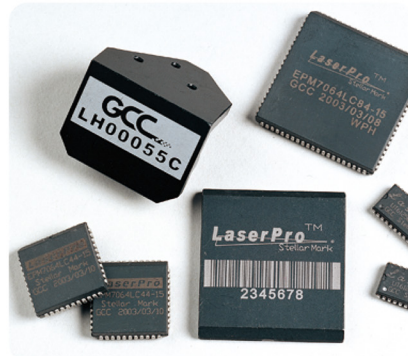
Paper

Laser Marking Systems

GCC LaserPro laser markers are fast and dependable industrial systems that can be setup to fulfill mass production needs. Various different kinds of application or special effects such as permanent marking are achievable with different types of laser.



Ring



IC Chip



Key Pad



Stainless Steel



Image Marking



Motor Encoder



Recordable Media



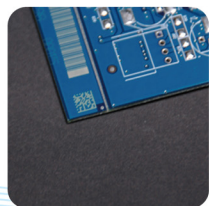
2-ply Laminate



Golf Club



Pharmaceutical Packaging



2D Barcode on PCB



Carton Box



1D Barcode



Lighter

GCC LaserPro Laser Engraving / Marking / Cutting Systems

GCC LaserPro laser product line includes engravers, markers, and cutters, which carries exceptional laser output quality, and provides quality engraving, marking and cutting results. With our continuous R&D development, our laser products have been awarded with numerous patents and earned countless awards.

Laser Engraving Systems

GCC LaserPro offers a variety of laser engravers with different wattages and table sizes to suit diverse business needs. Years of R&D experience and quality-assured product has brought GCC global acclaims and popularity among users worldwide.

Spirit PRO Series (CO2 / Fiber / Dual Model)

LaserPro Spirit LS PRO distinguishes itself from the competition by combining unparalleled speed, output quality, reliability, and user-friendliness. With an abundance of useful and innovative features, like SmartEYES™ CCD. The Spirit LS PRO sets the standard as the industrial benchmark for laser engravers.



Piolas 400

The latest professional laser engraving and cutting machine, the Piolas 400, is the pinnacle of our technological advancements. It boasts an unprecedented speed of 175ips, innovative SmartEYES and live-view CCD making operation seamless and effortless.



S400

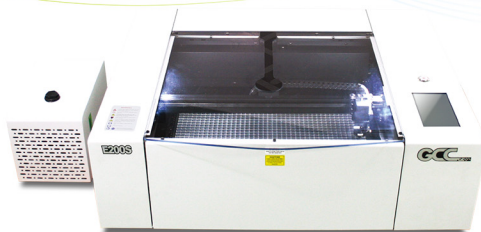
Inherit all the advantages from Spirit Hybrid, a brand new machine – S400 features 140ips processing speed by DC servo motor, innovative touch panel, user friendly interface and a modern good looking design. Together with SmartLID easy access, dust protection, S400 presents you the highest throughput and precise laser quality.



Laser Engraving Systems

E200S

E200S provides an easy operating workflow and is able to complete different processing procedures quickly. Most importantly, E200S contains various advanced functions like blue laser module as an option, with stable quality, and excellent safety features.



Spirit GLS Hybrid

Spirit GLS Hybrid is an award-winning model of Spirit line for laser machines. In succession to GCC LaserPro's worldwide accolades features, Spirit GLS Hybrid further upscales its capability to CO₂ & Fiber Hybrid laser option in one system. Let this hybrid laser machine upgrade your business for more engraving, cutting, marking applications on organic and metal materials.

Spirit Series (Spirit, Spirit LS)

The cream of the crop, the Spirit Series with Spirit and Spirit LS models are the professional models from the ingenious GCC LaserPro laser machine line up. Equipped with the most versatile and up-to-date features available in the industry, the Spirit Series is the best choice for advanced use.



C180II

The desktop C180II is designed to provide an enjoyable engraving experience. Underneath the stylish exterior is a full 18" x 12" (458 x 305 mm) working area. Engraving depth can be easily extended from the normal 4 inches to 6 inches in less than a minute. The C180II is an all purpose laser engraving system that delivers spectacular engraving and cutting results and makes every job a pleasant working experience.

Mercury III

The workhorse models from the GCC LaserPro laser machine line up answers the call for your everyday production needs. With a huge worldwide installation base and proven track record, these models are consistently granting satisfactions for everyday work.



MG380Hybrid

MG380Hybrid is equipped with RF driven and DC excited dual CO₂ laser tubes at the same time which allow user to produce superior engraving and cutting work piece. All in one machine save your storage space and make your profit maximum. The GCC LaserPro users always have an edge over the others with numerous uniquely innovative and user friendly features.



Piolas 400 Series



Piolas



Equipped with SmartEYES™ CCD (Panoramic CCD)

SmartEYE™ CCD on the top-lid, enables to view all the working area. Help you do positioning with ease.



4.45 m/s (175 in/s) Engraving Speed

The world fast stand-alone laser machine.



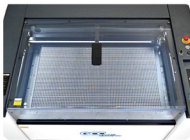
Standard Live-view Camera for Educational Use

Includes a standard live-view camera for educational use.



Transparent Upper Cover Window for a Wide Field of View

Transparent top cover to increase the visible range during processing.



Comes with a 7" Touchscreen Display

Easy access design simplifies maintenance and processing.



Specification		Piolas 400	Piolas 400SE
Laser Model		CO2	
Work Area	without CCD	1016 x 610 mm (40 x 24 in.)	
	with CCD		
Table Size	Standard Alu Grid Cutting Table with Leveling Adjustment		Standard Alu Grid Cutting Table w/o Leveling Adjustment
Working Table Size	1,021 x 614 mm (40.2 x 24.2 in.)		
Laser Source	60W, 80W, 100W, 120W		
Drive	AC Servo System		
Maximum Motor Speed	4.44 m/s (175 in/s)		
Z-Axis Movement	Automatic		
Safety	Class 1 Laser Product Complies with EN60825-1:2014, EN ISO 13849-1:2023		
	Class 2 Laser Product Complies with CDRH for CO2 Laser		
	2006/42/EC Machinery Directive Compliance		
	Class 4 Laser Product Compliant with CDRH with the optional pass-through door module		

* Speed is not equal to throughput. See dealer or visit www.gccworld.com for more detail.
Specifications are subject to change without prior notice.

Spirit PRO Series



Spirit LS PRO



Spirit LS PRO
(CO2 / Fiber Model)

Spirit GLS Hybrid PRO
(CO2 / Fiber / Dual Model)

SmartEYES™

SmartEYES™ camera allows you to preview your design to make positioning simple and easy.



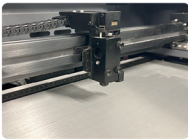
CO2 & Fiber Hybrid Lasers (Spirit GLS Hybrid PRO Only)

GCC Hybrid technology allows to install CO2 & Fiber dual lasers in one system to expand your business from organic materials processing to direct metal engraving.



DuraGuide

The Spirit LS PRO features a robust motion system with reinforced Kevlar belts and precise servomotor control for superb output quality during rapid movement.



SmartLIDTM (Patented)

An innovative lid that opens from both ends allowing easier access for daily maintenance.



Easy to use 4" Touch Panel

The touch panel provides a coherent hot-key design and graphic icons for direct laser parameter adjustments, unlimited job repetition, queuing, deletion, and more.



Specification		Spirit LS PRO	Spirit GLS Hybrid PRO
Laser Model		CO2 / Fiber	CO2 / Fiber / Dual
Work Area		640 x 460 mm (25 x 18 in.) Extendable to 740 x 460 mm (29 x 18 in.)	860 x 610 mm (34 x 24 in.) Extendable to 965 x 610 mm (38 x 24 in.)
		30W to 100W 10.6-µm sealed CO2 Laser	
Laser Source	CO2	30W or 50W sealed CO2 Laser	
	Fiber	30W or 50W fiber laser	
	Dual	Not Available	Available
Drive		Closed-loop DC servo control	
Maximum Engraving Speed*	CO2	30W - 40W: 2.54 m/s (100 in/s) / 60W - 100W: 3.04 m/s (120 in/s)	
	Fiber	30W or 50W: 3.04 m/s (120 in/s)	
Z-Axis Movement		Automatic	
Safety		Class 1 Laser Product Compliant with EN60825, Class 2 Laser Product Compliant with CDRH, 2006/42/EC Machinery Directive Compliance Class 4 Laser Product Compliant with CDRH with the optional pass-through door module	

* Speed is not equal to throughput. See dealer or visit www.gccworld.com for more detail.
Specifications are subject to change without prior notice.

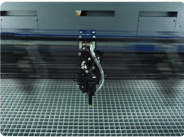
S400



S400

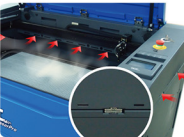
Perfect Cutting and Engraving Throughput

Maximum 3.55 m/s (140 in/s) processing speed with powerful DC servo motor to boost productivity while maintaining precision.



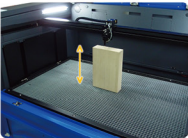
SmartFLOW™ Technology

SmartFLOW™ invention creates a perfect Air Flow to enhance the vacuum effect and bring out the dust completely while working.



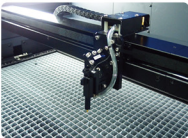
Higher Working Depth

Depth of Z-axis up to 11" (280 mm)



SmartSEAL™ Technology

New gantry design to prevent dust, the easy take-off cover also makes the maintenance a lot easier.



Pass-through Front to Rear Doors (Optional)

A design with doors on both ends of the laser engraver to accommodate extremely long working pieces, front door without the need for a screwdriver.



Specification	S400			
Laser Model	CO2		Fiber	Dual
Work Area	916 x 610 mm (36 x 24 in.) Extendable to 1016 x 610 mm (40 x 24 in.)			
Table Size	Standard Grid Cutting Table 1019 x 613 mm (40.1 x 24.1 in.)			
Laser Source	10.6-μm CO ₂ laser	9.3-μm CO ₂ laser	Fiber laser	10.6-μm CO ₂ laser: 60 to 100W
	60~120W	60W	20 / 30 / 60W	Fiber laser: 20 / 30 / 60W
Drive	Closed-loop DC servo control			
Maximum Motor Speed	3.55 m/s (140 in/s)			
Z-Axis Movement	Automatic			
Safety	Class 1 Laser Product Compliant with EN60825			
	Class 2 Laser Product Compliant with CDRH			

* Speed is not equal to throughput. See dealer or visit www.gccworld.com for more detail.
Specifications are subject to change without prior notice.

E200S



E200S

Simple but Professional

Multifunction user interface for both beginners and advance users.



Unmatchable Output Quality

E200S takes your engraving and cutting to a level beyond other desktop laser engravers.



Standard Water Chiller for Long-time Working

E200S desktop laser engraver comes with a standard water chiller to ensure machine efficiency.



7" Large Touch Panel

With colorful intuitive 7" touchscreen interface, E200S desktop laser engraver can bring your inspiration to life.



Live Camera Preview

E200S's on board camera allows you to preview your design to make positioning simple and easy.



Specification	E200S
Laser Model	CO2
Work Area	510 x 330 mm (20 x 12.9 in.)
Table Size	Standard Grid Cutting Table 540 x 360 mm (21.2 x 14.2 in.)
Laser Source	40W Sealed CO2 Laser
Drive	Closed-loop DC servo control
Maximum Motor Speed	0.51 m/s (20 in/s)
Z-Axis Movement	Manual
Safety	Class 1 Laser Product Compliant with EN60825
	Class 2 Laser Product Compliant with CDRH

* Speed is not equal to throughput. See dealer or visit www.gccworld.com for more detail.
Specifications are subject to change without prior notice.

Spirit Series (Spirit, Spirit LS)



Spirit



Spirit LS



SmartPIN™ AutoFocus (Patented)

The plug-and-play probe design makes focusing a one-touch process and provides the accuracy and precision required for optimum quality in the lasing process.



Pass-through Front / Rear Doors (Optional)

SmartFLOW™ invention creates a perfect Air Flow to enhance the vacuum effect and bring out the dust completely while working.



Key Switch & Emergency Stop

A key switch prevents unauthorized use, while a prominent emergency button on top stops the laser and motion instantly for safety.



Drag-N-Play

An innovative feature based on servomotor technology simplifies operations and setup time. Just hand drag the lens carriage to the desired position and press start to begin the job.



SmartCENTER™ (Patented)

The SmartCENTER™ function makes it easy for users to automatically locate the center point of objects, significantly reducing setup time.



Specification	Spirit	Spirit LS
Laser Model	CO2	
Work Area	640 x 460 mm (25 x 18 in.) Extendable to 740 x 460 mm (29 x18 in.)	
Table Size	790 x 530 mm (31.1 x 20.9 in.)	
Laser Source	12 to 100W 10.6-µm sealed CO2 Laser / 20W & 60W 9.3-µm sealed CO2 Laser	
Drive	Closed-loop DC servo control	
Maximum Motor Speed	1.52 m/s (60 in/s)	2.03 m/s (80 in/s)
Z-Axis Movement	Automatic	
Safety	Class 1 Laser Product Compliant with EN60825 Class 2 Laser Product Compliant with CDRH	

Spirit GLS Hybrid



Spirit GLS Hybrid



CO2 & Fiber Hybrid Lasers

GCC Hybrid technology allows to install CO2 & Fiber dual lasers in one system to expand your business from organic materials processing to direct metal engraving.



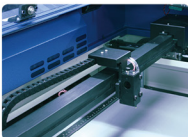
Pass-through Front and Rear Doors (Optional)

Optional front and rear door design enables loading of extremely long working pieces.



DuraGuide

A reliable motion system with reinforced Kevlar belts and precise servomotor control ensures superb output quality during rapid movement.



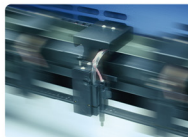
Real Pointer Alignment Feature

Extra beam combiner to align red pointer with laser beam, What You See is What You Get.



SmartACT™ (Patented)

Ground-breaking technology that reduces the ramping process, the job running time, which translates into higher productivity.



Specification	Spirit GLS Hybrid	
Laser Model	CO2	Fiber
Work Area	860 x 610mm (34 x 24 in.) Extendable to 965 x 610 mm (38 x 24 in.)	
Table Size	1025 x 705 mm (40.3 x 27.7 in.)	
Laser Source	10.6-µm CO2 laser 30~100W	Fiber laser 20~60W
Drive	Closed-loop DC Servo Control	
Maximum Motor Speed	2.03 m/s (80 in/s)	
Z-Axis Movement	Automatic	
Safety	Class 1 Laser Product Compliant with EN60825 Class 2 Laser Product Compliant with CDRH	

* Speed is not equal to throughput. See dealer or visit www.gccworld.com for more detail.
Specifications are subject to change without prior notice.

* Speed is not equal to throughput. See dealer or visit www.gccworld.com for more detail.
Specifications are subject to change without prior notice.

Mercury III



MercuryIII

C180II



C180II

AutoFocus (Patented)

Patented AutoFocus Gauge ensures precise focal point adjustment for laser engraving. It eliminates human error and provides accurate distance measurement from the material surface.



Drag-N-Play

An innovative feature based on servomotor technology simplifies operations and setup time. Just hand drag the lens carriage to the desired position and press start to begin the job.



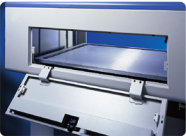
Easy to Use Control Panel

A control panel with coherent hot-key design and graphical icon displays that allows you to change laser parameter settings, set jobs to repeat unlimited times, queue jobs, delete jobs, and more.



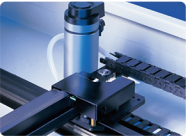
Pass-through Front / Rear Doors (Optional)

A design with doors on both ends to accommodate extremely long working pieces without the need for a screwdriver.



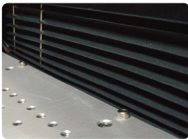
DC Servo Motor

A Closed-loop DC servo motor offers higher continuous shaft power and speed compared to a stepper of the same size. Its continuous movement provides greater accuracy, eliminating the need for constant stopping and starting.



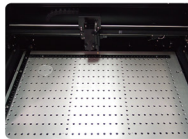
Dust Protection Design (Patented)

Dust protection covers around working table to provide marvelous exhaust vacuum together with Smart Vacuum design, and prevention dust accumulated on laser system.



Built-in SmartBOX™ (Patented)

The built-in SmartBOX™ feature produces a downward pulling force to keep light items in place creating a stable working environment.



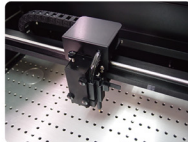
Simple and Intuitive Control Panel

A user-friendly menu-driven interface system simplifies operation. Hot keys design and job status display facilitates your work and makes it clear and easy to carry out.



Closed-loop DC Servo Motor and Reliable Motion System

The C180II utilizes high performance Closed-loop DC servo motors for precise and fast carriage movement combined with a reliable motion system to produce exceptionally accurate outputs.



SmartPRINT™ (Optional)

The GCC LaserPro SmartPRINT™ software features powerful functions, an intuitive interface and embedded GCC LaserPro laser parameter setting for both MAC and Windows users.



Specification	Mercury III
Laser Model	CO2
Work Area	635 x 458 mm (25 x 18 in.)
Table Size	790 x 530 mm (31.1 x 20.9 in.)
Laser Source	12, 30, 40, 60W Sealed CO2 Laser
Drive	Closed-loop DC Servo Control
Maximum Motor Speed	1.07 m/s (42 in/s)
Z-Axis Movement	Automatic
Safety	Class 1 Laser Product Compliant with EN60825 Class 2 Laser Product Compliant with CDRH

Specification	C180II
Laser Model	CO2
Work Area	18 x 12 in. (458 x 305 mm)
Table Size	20.4 x 14.7 in. (520 x 375 mm)
Laser Source	12 to 40 Watt Sealed CO2 Laser
Drive	Closed-loop DC Servo Control
Maximum Motor Speed	1.01 m/s (40 in/s)
Z-Axis Movement	Automatic
Safety	Class 1 Laser Product Compliant with EN60825 Class 2 Laser Product Compliant with CDRH

* Speed is not equal to throughput. See dealer or visit www.gccworld.com for more detail.
Specifications are subject to change without prior notice.

* Speed is not equal to throughput. See dealer or visit www.gccworld.com for more detail.
Specifications are subject to change without prior notice.

MG380Hybrid



MG380 Hybrid



Superb Engraving and Cutting Quality

Embrace total solution in one machine. Innovative GCC LaserPro MG380Hybrid deliver superior engraving and cutting result by its high end technology.



Pass-through Front / Rear Doors (Optional)

This convenient front and rear door design enables operators to load extremely long working pieces.



Emergency Stop

Big red button located on the top of the machine allows operators to stop the laser and the motion carriage immediately to provide a highly safe operational environment.



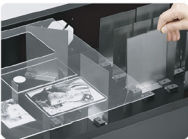
Programmable Origin

Easy-to-use position modes in Drag-N-Engrave simplify job setup by allowing operators to effortlessly relocate the origin position, streamlining repetitive workflows.



SmartBOX™ (Optional)

This innovative design is composed of a ventilation box, a honeycomb table and easily rearrangeable magnetic supporting pieces. The SmartBOX™ provides great cutting quality and remarkably enhances air extraction.



Specification		MG380Hybrid	
Laser Model	MG380Hybrid-12100		MG380Hybrid-30100
Work Area	960 x 610 mm (38 x 24 in.)		
Table Size	1085 x 750 mm (42.7 x 29.5 in.)		
Laser Source	Sealed CO2 Laser		
Drive	Closed-loop DC Servo Control		
Maximum Motor Speed	1.01 m/s (40 in/s)		
Z-Axis Movement	Automatic		
Safety	Class 1 Laser Product Compliant with EN60825		
	Class 2 Laser Product Compliant with CDRH		

* Speed is not equal to throughput. See dealer or visit www.gccworld.com for more detail.
Specifications are subject to change without prior notice.

Laser Cutting Systems

GCC LaserPro laser cutters offer an ideal cutting and engraving solution for industrial users. Laser cutters are equipped with sealed Fiber / CO₂ laser tubes with reliable quality, providing high power wattage for quality cutting capability and high throughput.

X-Series
(X252RX, X380RX, X500III Pro)

The GCC LaserPro X-series is the best economical choice for laser cutting. 3 models are available from the X-series: X252RX, X380RX, and the X500III Pro.



FMC 280-Z1

Compact size high power fiber laser engraving and cutting system, GCC LaserPro delivers an easy way to operate fiber laser cutting system which yields spectacular cutting edges. The FMC 280-Z1 is a cutting specialist engineered for performance and produces excellent output quality. Innovative features developed from GCC LaserPro's years of experience makes the FMC 280-Z1 the most user-friendly system on the market.



T500

Developed on the basis of GCC LaserPro's accumulated technology with new powerful motion system. GCC LaserPro T500 is capable of exceptional 3D engraving quality and cutting at high speed which make it a high ROI laser system on the market. Equipped powerful 200W laser tube allow user to deliver clear and fine cutting result. GCC LaserPro T500 is a dedicated design to fulfill your cutting and engraving needs in one machine with high throughput and superb quality.



X-series (X252RX,X380RX,X500III Pro)



Outstanding Cutting Capability

X Series delivers high cutting quality with GCC LaserPro's unique laser firing control technology.



Pass-through Front / Rear Doors (Optional)

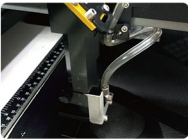
A design with doors on both ends to accommodate extremely long working pieces.

*Pass-through Material Thickness:
X252RX & X380RX:6.5 inch.
X500III Pro:1inch.



Unique Motion Guide

A unique motion guide is designed specially for X500III Pro by adopting a light weight and high strength structure, together with DC servo motor to provide first class stability and accuracy. (For X500III Pro)



Key Switch & Emergency Stop

The key switch prevents unauthorized use, while the prominent emergency button on top instantly stops the laser and motion carriage for safety.



AAS Contour Cutting Device (patented) (Optional)

Developed by LaserPro, AAS is an exceptionally user-friendly operation which offers accurate and faultless contour cutting by automatically tracking the position of graphics. *N/A for x500III Pro.



FMC 280-Z1



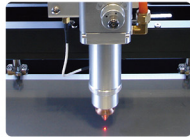
Unique Fiber Laser Source with Exquisite Cutting Capability

Leading fiber laser with unique firing mode control meets varied metal sheet processing needs, cutting up to 3mm thick stainless steel and highly reflective metals like aluminum and copper with clear edges.



Capacitive Cutting Head with Autofocus

Precise capacitive cutting head design is able to keep fixed distance between cutting head and heat deformed material to obtain consistent cutting quality over the platform.



Drag-N-Play

The "Drag-N-Play" feature greatly reduces the complex set up procedures and allows the users to directly drag the lens carriage to the starting point of a job.



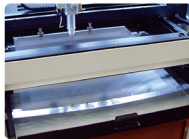
Vivid Image Engraving

A user-friendly menu-driven interface system simplifies complex tasks. Hot keys design and job status display facilitates your work and makes it clear and easy to carry out.



Collecting Drawer

It is a convenient design for users to collect completed workpieces and clean scrap easily.



Specification

X-series

Laser Model	X252RX	X380RX	X500III Pro		
Work Area	635 x 458 mm (25 in. x18 in.)	960 x 610 mm (38 x 24 in.)	1300 x 916 mm (51 x 36 in.)		
Laser Cooling	Water-cooled	Water-cooled	Water-cooled		
Laser Source	80W / 100W	80W / 100W	100W	130W	150W
	Sealed CO2 Laser	Sealed CO2 Laser	Sealed CO2 Laser		
Drive	Closed-loop DC Servo Control				
Maximum Motor Speed	1.01 m/s (40 in/s)				
Z-Axis Movement	Automatic				
Safety	Class 1 Laser Product Compliant with EN60825				
	Class 2 Laser Product Compliant with CDRH				

Specification

FMC 280

Laser Model		FMC 280-Z1
Work Area	Normal	712 x 370 mm (28 x 14.5in.)
	With Thin Film Clamp	458 x 305 mm (18 x 12 in.)
Laser Source	1070nm fiber laser source, 1.5kW peak power	
Max. Part Size (L x W x H)	786 x 542 x 120 mm (30.9 x 21.3 x 4.7 in.)	
Drive	Closed-loop DC Servo Control	
Maximum Motor Speed	0.51 m/s (20 in/s)	
Z-Axis Movement	Automatic	
Safety	Class 1 Laser Product Compliant with EN60825	
	Class 2 Laser Product Compliant with CDRH	

* Speed is not equal to throughput. See dealer or visit www.gccworld.com for more detail.
Specifications are subject to change without prior notice.

* Speed is not equal to throughput. See dealer or visit www.gccworld.com for more detail.
Specifications are subject to change without prior notice.

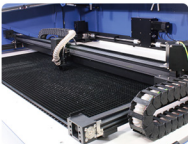
T500



T500

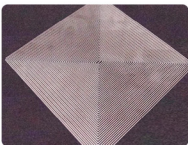
AC Servo Motor and Unique Motion

High torque and high speed AC servo motor assures long motor lifetime and high precision. A light weight and high strength structure together with AC servo motor and steel cord belt to provide first class stability and accuracy.



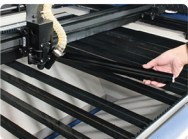
Excellent Speedy Scribing Quality

T-500 embrace extraordinary control system and rigid motion system allow user to create top-notch vector scribing quality with high speed.



Knife-shaped Cutting Table

Unique cutting table with tipped bars that can be easily adjusted without tools to create different levels of working depths. The cutting table of T500 reduces laser reflections and delivers clear cutting edge.



Outstanding Cutting Capability

T500, with LaserPro's advanced laser firing control, delivers high-quality cutting. With up to 200W power, it easily cuts 1" (25mm) acrylic in one pass, leaving a smooth finish.



Extension Table (Optional)

Extension roller tables help loading and unloading large piece work piece with ease, furthermore, it extends T500 maximum parts size to 1300 x 1500 mm (51" x 59").



Specification

T500

Laser Model	60W	80W	100W	150W	200W
Work Area	1300 x 905 mm (51 x 35 in.)				
Table Size	1346 x 916 x 127 mm (53 x 36 x 5 in.) with 2"/4" lens(w/o Cutting Table)				
Cooling	Air-cooled			Water-cooled	
Focus Lens	Standard 4" focal lens in enclosed lens carriage (Optional 2"/6" lens)			Standard 6" focal lens in enclosed lens carriage (Optional 2"/4" lens)	
Drive	AC servo Control				
Maximum Motor Speed	1.01 m/s (40 in/s)				
Z-Axis Movement	Manual				
Safety	Class 1 Laser Product Compliant with EN60825 Class 2 Laser Product Compliant with CDRH 2006/42/EC Machinery Directive Compliance Class 4 Laser Product Compliant with CDRH with the optional pass-through door module				

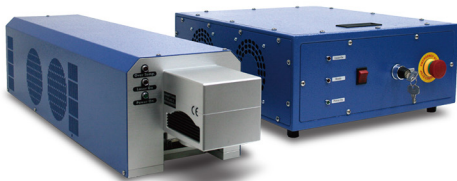
Laser Marking Systems

GCC LaserPro laser marker series carries selection of CO₂ and fiber, laser sources, providing users in any industry with outstanding quality equipments. The galvo scan-head brings you fast marking speed and is able to perform the finest marking detail.



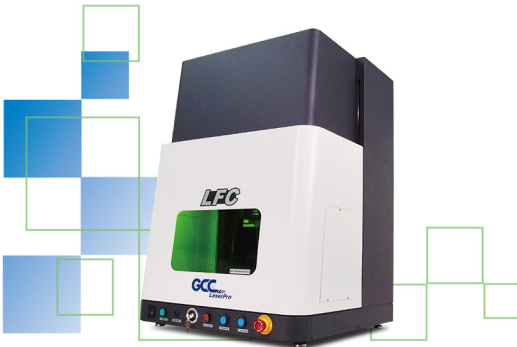
StellarMark I Series & C Series

The GCC StellarMark C-series and I-series are high speed galvanometer laser marking systems. The C-series are marking systems with CO₂ laser while I-Series are marking systems with fiber lasers suitable for working with metallic materials.



LFC D Desktop Workstation

GCC LaserPro LFC D is a desktop workstation for laser markers. The industry-level equipment has many advanced features such as an anti-trapping door, key switch, user-level control, pass-through, etc. and meets customers' needs completely.



3DS

StellarMark 3DS Laser Marker series is integrated with a 3D scan head, which allows users to process round/cylinder objects with ease. The scan head provided with a 300x300mm working area and the focus range is 100mm.



StellarMark I Series



I-Series



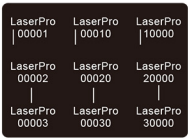
G-Mark Library (Optional)

This programmable software can be used to customize functions by using VB scripts. All commands are received real time from a master PC and position offsets, rotating angles, and sequential marking can be easily set up.



Automatic Serial Marking

With this feature, users can increase or decrease the serial part number automatically.



Barcode Marking

19 types of 1D and 8 types of 2D barcodes (Data Matrix, PDF417, QR Code and Maxi Code) are available.



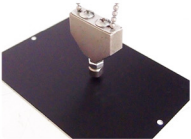
Mark on The Fly (Optional)

Non-stop, "on-the-fly" marking of parts maximizes productivity. Precise laser can mark fast-moving parts while the conveyor is at constant or varying speed.



Pyramid Focus Tool

The innovative and patented pyramid focus tool is an accessory unit for providing the best working distance on StellarMark IFII series.



Specification

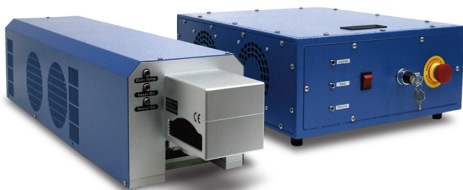
StellarMark I-series

Laser Model		IFIIS 20JFL	IFIIS 30JFL	IFIIS 50JFL	IFIIS 60JFL
Laser Source	Wavelength	1064 nm			
	Type	Yb-doped, MOPA			
	Output Power	20W	30W	50W	60W
	Beam Mode	TEM00			
	Beam Quality (M²)	<1.5	<1.5	<1.5	<1.8
	Frequency	1-600 kHz	1-600 kHz	1-600 kHz	1-400 kHz
	Waveform	Single			
	Cooling	Air-cooled			
Max. Linear Marking Speed		3,000 mm/s			
Max. Marking Speed		10,000 mm/s			
Safety		Class 4 (EN60825-1 Class 1 available with safety shield and LFC)			

StellarMark C Series



C-Series



RoHS Compliance

As a market leader and eco-conscious manufacturer, GCC is committed to preserving the global environment. Our products comply with EU Directive 2002/95/EC (RoHS).



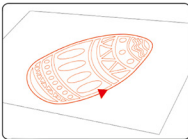
Wobble Marking

This function allows the true type text to be marked with thicker line.



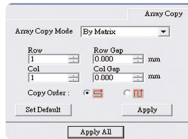
Preview Mode

Variable-speed, red dot pointer "preview" mode performs accurate and easy marking positioning on the marked part.



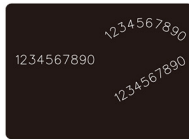
Array Copy

Users can create multiple copies of a text or graphic by specify the number of copies to be replicated and the graphic will be rendered in a matrix format.



Font Marking Variations

This feature enables marking of a variety of character expressions via Arc Alignment, Angle Alignment, and Marking Direction.



Specification

StellarMark C-series

Laser Model		CIIS 12	CIIS 30V
Laser Source	Wavelength	10.6 μm	
	Type	CO2, sealed-off	
	Output Power	12W	30W
	Cooling	Air-cooled, no water chiller required	
Max. Linear Marking Speed		3,000 mm/s	
Max. Marking Speed		10,000 mm/s	
Safety		Class 4 (EN60825-1 Class 1 available with safety shield and LFC)	

* Speed is not equal to throughput. See dealer or visit www.gccworld.com for more detail.
Specifications are subject to change without prior notice.

LFC D



LFC D

3DS



3DS

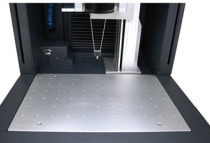
Pass-through Side Panel

Removable side doors allow user to process long work pieces with ease for greater business flexibility.



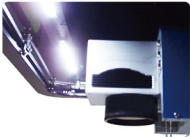
300x300 mm Standard Table

Standard table with matrix M6 circular slots for fixture mounting; work piece setup could not be easier than this.



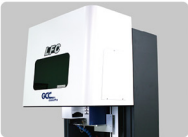
Internal Illumination

LED illuminates the working space for clear view of work in process.



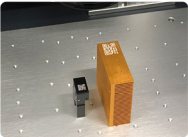
Automatic and Anti-Trapping Safety Door

Automatically controlled front door opens and closes to secure safe operation.



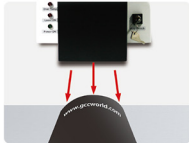
MultiFOCUS Function (Optional Item)

MultiFOCUS function automates multiple focal distances based on object height, adjusting the Z-axis accordingly, reducing the need for frequent focal distance adjustments.



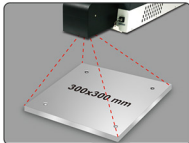
D Scan Head

A 3-axis scan head is included for the best marking solution for round/cylinder objects.



300x300 mm Working Area

Standard 300x300 mm working area that helps you process large objects and allow your for far more applications.



All-in-one Design

The machine has an advanced All-IN-ONE design featuring size and easy integration into the production line.

*All-IN-ONE design is available only for 20W and 30W.



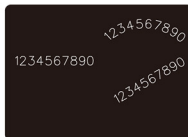
Key Switch

Users can create multiple copies of a text or graphic by specify the number of copies to be replicated and the graphic will be rendered in a matrix format.



Font Marking Variations

The safety feature enables the manager/owner to keep the machine locked in a specific mode to avoid tampering.



Specification	LFC D
Laser Model	LFC D
Available Laser Marker	CIIA 12/30, CIIP12/30, CIIS 12/30
	IFII 20/30/50JFL
	IFIIS 20/30/50JFL
	3DS
Scan Field	Max. 300 x 300 mm
Working Table Size	550 x 360 mm
Front Door	Automatic door
Max. Loading (Z-axis Table)	25 kg
Safety	Class 1 laser product compliant with EN-60825-1 Class 2 laser product compliant with CDRH (LFC D + StellarMark C series) Class 3R laser product compliant with CDRH (LFC D + StellarMark I series/3DS series) Class 4 Laser Product Compliant with CDRH with the optional pass-through door module

Specification		3DS		
Laser Model		3DS-20JFL	3DS-30JFL	3DS-50JFL
Laser Source	Wavelength	1064 nm		
	Type	Fiber Laser		
	Output Power	20W	30W	50W
	Cooling	Air-cooled, no water chiller required		
Working Area		300 x 300 mm		
Spot Size		0.067 mm		
Max. Linear Marking Speed		6,000 mm/s		
Max. Marking Speed		12,000 mm/s		
Safety		Class 4 (EN60825-1 Class 1 available with safety shield and LFCII and LFC D)		

* Speed is not equal to throughput. See dealer or visit www.gccworld.com for more detail.
Specifications are subject to change without prior notice.

* Speed is not equal to throughput. See dealer or visit www.gccworld.com for more detail.
Specifications are subject to change without prior notice.