

## Optional Items



Rotary Attachment



MultiFOCUS



## Laser Marker

GCC LaserPro

## LFC D Desktop Workstation

Small and compact, make ideas happen

Specification	LFC D Desktop Workstation
Model	LFC D
Available Laser Marker	CIIA 12/30, CIIP12/30, CIIS 12/30
	IFII 20/30/50RMZ, IFII 20SHS, IFII 20/30/50JFL
	IFIIS 20/30/50JFL, IFIIS 30/60JML
	3DS
Scan Field	Max. 300 x 300 mm
Working Table Size	550 x 360 mm
Front Door	Automatic Door
Max. Loading (Z-axis Table)	25 kg
Z-axis Travel	80 - 620 mm
Safety Class	Class 1 laser product compliant with EN-60825-1 Class 2 laser product compliant with CDRH (LFC D + StellarMark C series) Class 3R laser product compliant with CDRH (LFC D + StellarMark I series/3DS series)
Software	G-Mark / MM3D
Operating System	Win 7 / 8 / 10 / 11
Power Supply	AC Auto Switching 115 / 230V, 50-60Hz / Single Phase
Power Consumption	Max. 1240W
Operating Temperature	15°C~35°C
Operating Humidity	10 ~ 80% Non condensing
Dimension (L x W x H)	750(L) x 700(W) x 1000(H) mm 940(L) x 1020(W) x 1470(H) mm (with package)
N.W.	100 kg
G.W.	180 kg
Optional Item	Rotary Attachment
	MultiFOCUS
	Air Extraction System

## Max. Work Piece Size

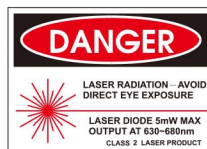
C-Series				
Lens	Scan Area	Max. Work Piece Size		
		Length	Width	Height
10	10 x 10 mm	550 mm	360 mm	577 mm
50	50 x 50 mm			543 mm
70	70 x 70 mm			514 mm
140	140 x 140 mm			390 mm
140DL	140 x 140 mm			337 mm

I-series				
Lens	Scan Area	Max. Work Piece Size		
		Length	Width	Height
70	70 x 70 mm	550 mm	360 mm	485 mm
110	110 x 110 mm			405 mm
180	180 x 180 mm			304 mm
300	300 x 300 mm			53 mm
300(3DS)	300 x 300 mm			335 mm

\* Above specifications are subject to change without further notices. See dealer or visit <http://www.GCCworld.com> for more details.

\* All above spot size will be material dependent.

Authorized Dealer


[www.GCCworld.com](http://www.GCCworld.com)


GCC Headquarters 4F-1., No.236, Fude 2nd Rd., Xizhi Dist., New Taipei City 22151, Taiwan  
 GCC China No.1, Chen Feng Road, Yushan, Kunshan, Jiangsu 215300, China  
 GCC Europe B.V. Eglantierbaan 43-45, 2908 LV, Capelle a/d IJssel, The Netherlands  
 GCC America, Inc 20550 Carrey Road, Walnut, CA 91789, USA

886-2-6616-6692 Fax : 886-2-2694-6875  
 86-512-5726-1515 Fax : 86-512-5726-1518  
 31-10-458-9367  
 1-909-718-0248 Fax : 1-909-718-0251  
 US & Canada Only Toll Free: 1-888-284-5211



- Class 1 safety and MD (machine directive) certified for Industrial professions who care for operators' safety during laser processing
- Wide range of configurations for automation and applications
- Ideal for large objects or batch marking
- Easy setup and operation
- Sturdy and rigid steel chassis to meet industrial requirements
- Compatible with all GCC LaserPro StellarMark C (12W/30W), I, and 3DS series markers



Color Marking

Metallic Part Marking

IC Marking

Keypad Marking

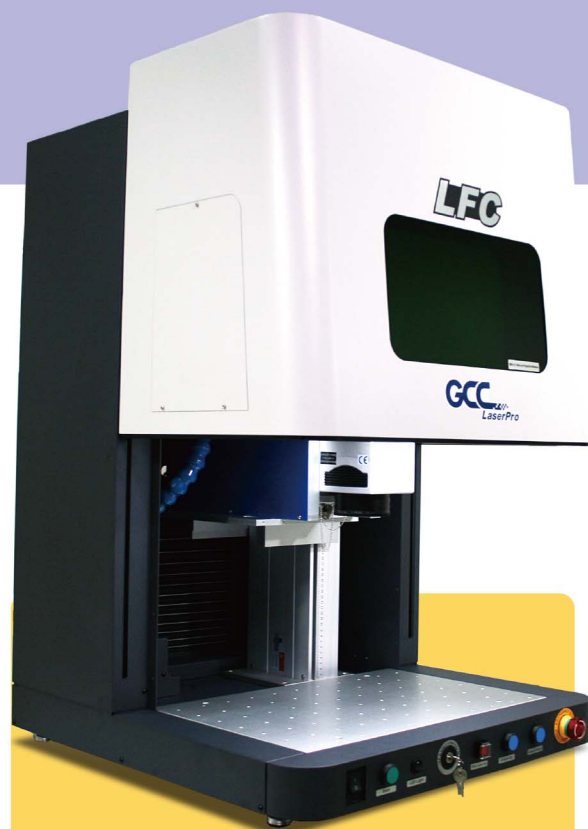
Metallic Parts Marking

Jewelry Marking

Plastic Marking

Laser Marker

# GCC LaserPro LFC D Desktop Workstation



## LFC D Desktop Workstation

GCC LaserPro LFC D is a desktop workstation for laser markers. The industry-level equipment has many advanced features such as an anti-trapping door, key switch, user-level control, pass-through, etc. and meets customers' needs completely. LFC D is considered a class 1 device to keep operators safe and sound and, therefore, the best industrial solution.

### Automatic and Anti-Trapping Safety Door

Automatically controlled front door opens and closes to secure safe operation.



### Key Switch

Key Switch manages different authority levels between Service Mode and Operator Mode to prevent unauthorized access to the production setups.

### 300x300 mm Standard Table

Standard table with matrix M6 circular slots for fixture mounting; work piece setup could not be easier than this.

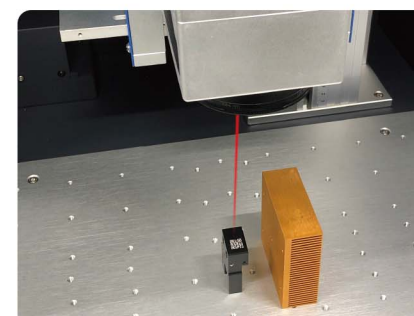
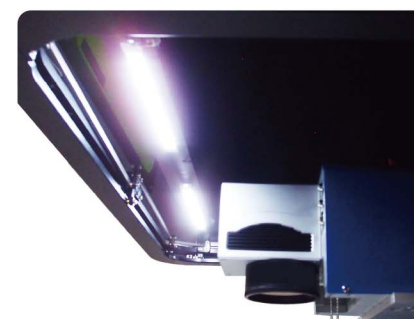


### Emergency Stop

Big red button on the right of machine allows operators to stop the laser and AC power immediately for much safer operation.

### Internal Illumination

LED illuminates the working space for clear view of work in process.



### MultiFOCUS Function (Optional Item)

MultiFOCUS function allows user to define multiple focal distances at once according to the object height and Z-axis automatically adjusts accordingly, eliminating the frequent needs to set focal distance.

### Electronic Z axis

Electronically controlled Z up and down buttons make it easy to fine tune the focus.

